

© TruSelf Inc

All rights reserved.



PRESENTED BY DR. HOLMES KEIKOBAD

Deep Diagnosis by Design Workshop—A Preview

A Preview

Deep Diagnosis by Design Home Study Course on DVD & Video

This Course is an actual weekend workshop recorded on DVD. A VHS version is also available.

This Course teaches you the forms of Design which elements in disharmony can take.

By sequentially placing characteristic signs and symptoms on a 5 element grid, the *primary element*

at fault in complex illnesses quickly becomes visible.

Harmonize this and the many problems re-taken care of with minimal intervention.

In this workshop you learn how a history of this nature is taken and powerful treatment protocols applied..

To explain this prac-

tically Dr. Holmes Keikobad, your Instructor, works with four difficult cases.,

The course also introduces a simpler *checklist based* approach to Eight Extraordinary Channels diagnosis (see p 5) with which one can refine the diagnosis.

Professional camera work in a clinical setting



The Course is professionally filmed on location to give you a vivid learning experience as though you were actually there. In this shot Dr. Holmes is working with a case of chronic Liver Stagnation which transformed into a widespread Stomach Damp Heat

To return to Home page click here: <http://www.acu-free.com>

A “Chronic LV Stagnated offending ST” Tongue



Tongue picture in a case of chronic Liver Stagnation Offending Earth caused largely by inability to express Anger, which in turn took to Damp Heat.

You will see how this diagnosis was reached, with a step by step questioning during history taking, & systematically plotting onto the 5 element grid.

Note the crenellated sides, a central Stomach fissure, an uneven coat.

Sublingual Venous Congestion in LV Stagnated Tongue



Same tongue shows marked venous congestion under the tongue, especially at the posterior third, which signifies a SP stagnated situation.

Note the crenellations on the tongue sides, hallmark of chronic, long drawn out LV Stagnation with episodes of Heat and Fire.

A Case of LV Stagnation causing Heated Damp



An edematous foot with a tendency to Heat which led to Dryness with some scaling.

Note the significant involvement of point GB 40.

Note also the extreme damage of the nails and a greenish yellow discoloration of the great toe nail, affirming a LV ST condition.

To return to Home page click here: <http://www.acu-free.com>

A Case of “Pseudo Fibromyalgic” Symptomology



A sharply narrowed tongue tip with red discoloration.

When the natural sideward spread of the tongue is restrained one thinks of a Dai problem.

As Dai problems often involve the Shaoyang vessels, one begins to suspect a Wood based pathology.

This is one of the Four Difficult Cases you will see unraveled.

Checking the Pulses by a Creative Nan-Jing Format



Dr. Holmes has developed a somewhat pragmatic version of pulse taking which is long on practicability and short on learned treatises.

In the Course you get a running commentary on what he is feeling and what it implies.

A sort of Pulses by Proxy.

Very few needles, thank you very much!



With Deep Diagnosis by Design you treat the one singular Element which went wrong in the first place, letting a “domino effect” take care of the multifarious symptoms which developed over the years.

In which case you end up using maybe 4 to 5 very shallowly placed needles and you move qi to where it naturally want to go.

This is the ‘domino’ in Traditional terms.

To return to Home page click here: <http://www.acu-free.com>

Didactic dialogues till the point is understood fully

Dr. Holmes explaining in great detail a fine point a student has raised



Ongoing discussions lead you through the complex forces which fashion pathological change till the element-specific Design is visible

This experience will prove to be one of the more gripping and involving learning experience you are likely to participate in, like a lot like a whodunit thriller where the stakes are phenomenally high.

By the way, if you are partial to the emotional aspects of the etiology of things, all the cases you will see had complex emotional patterns which resulted in the problems the cases labored under.

Expert Workbook and Checklists

The Workbook apart from templates which create the Design also contain *Checklists* which tabulate 8 Extraordinary Channel symptomology. These lists are available to you to use in your clinic and make you an expert in Extraordinary channel usage.

Here is an example and a sample page of the Ren and Yin Qiao Pair symptomology:

REN SYMPTOMOLOGY

Mainly Yin channel symptomology, especially those linked to Kidney and Liver pathology.

Neurosis

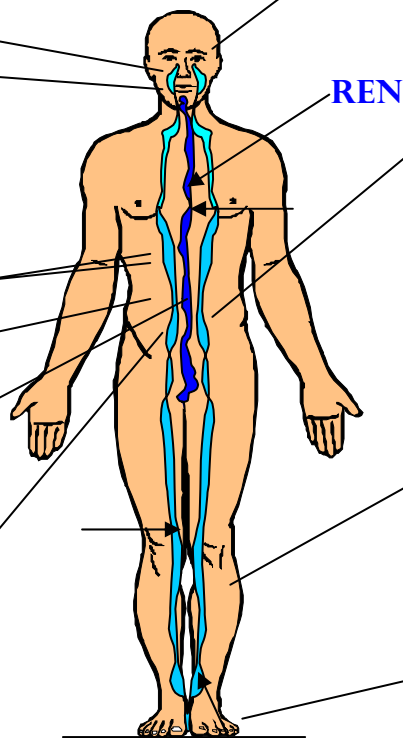
- Nose and throat problems
- Lower teeth pain

Upper warmer problems

- Such as asthma and chronic bronchitis
- Epigastric pain**
- Kidney Water problems** such as toothache, ear problems
- Ren trajectory problems

Lower warmer problems

- Pain lower abdominal region, colic
- Gynecological and menstrual problems [irregular menses]
- Urinary problems, retention, enuresis
- Leucorrhoea
- Hernia
- Hemorrhoids
- Infertility



YIN QIAO SYMPTOMOLOGY

- HYPERSOMNIA**
- Problems of eyes
- Intestinal disease**
- Lower warmer problems, e.g. lower abdominal pain
- Pain along waistline to genitals
- Genitor-urinary conditions
- Leucorrhoea
- Hernia
- Bowel problems

LEG MUSCLE PATHOLOGY

- Tightness and spasm along MEDIAL aspect of lower leg when LATERAL aspect is atrophied or flaccid
- Foot problems**
- Cold feet, foot problems

YIN QIAO

Reviews

The Course has found wide acceptance because of the facility it offers of attending an expert weekend workshop without the hassle of actually going there.

The Course is reviewed by NCCAOM and approved in California, Florida, Maryland, Massachusetts and very many other States which hold to NCCAOM standards.

People as far away as Uganda and Malaysia have found favor with it, as well as professionals from Canada and Australia and very many from the United States.

One interesting feedback is that people tend to archive the DVDS to refer to these again and again when need arises.

What next?

To order on line please click here: <http://www.acu-free.com>

If you prefer to order by phone please call toll free: 1.888.TRU.SELF [878.7353](tel:878.7353)

With best wishes to you on your quest to further learning

The Team at Tru Self

<http://www.acu-free.com>

To return to Home page click here: <http://www.acu-free.com>